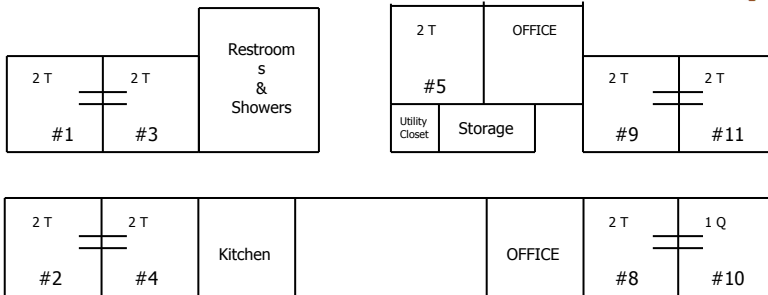


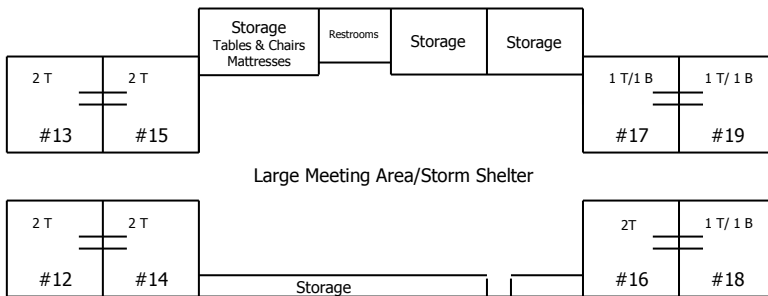
Retreat Center Room Layout*



Upper/Main Level



Lower Level



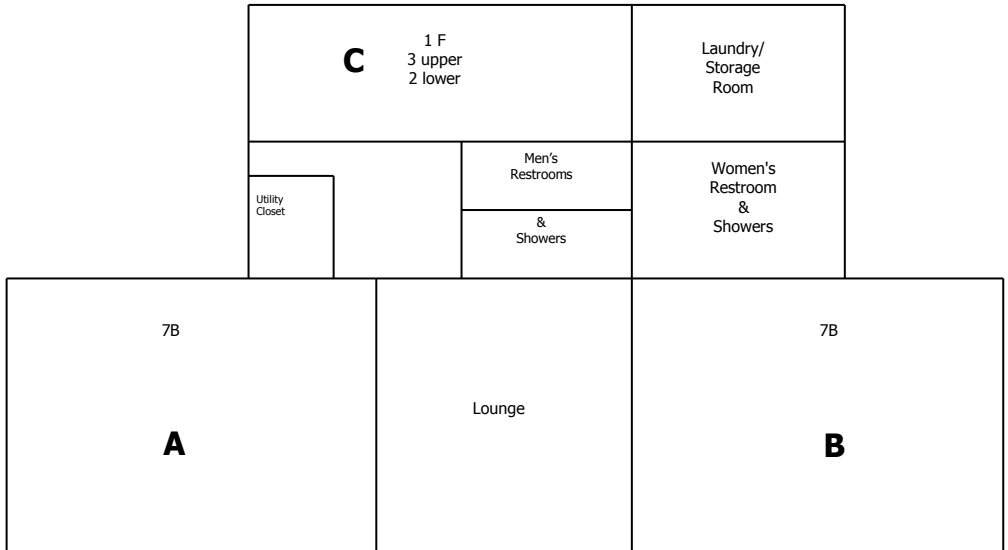
Retreat Center

The Retreat Center has 17 bedrooms equipped with individual temperature controls for heating and air. Most rooms consist of two single beds with a shared bathroom and shower. There is a fully equipped kitchen (table setting for 50), dining room, and a meeting/multi-purpose room which also serves as a storm shelter. Groups provide and prepare their own meals. Beds have pillows and a comforter. Please bring your own towels and personal toiletries. Bed linens (pillowcase, flat/flitted sheets) are available for rental. Kitchen towels and dish cloths are provided.

*T = twin beds B = bunk beds Q = queen bed F = full bed = semi-private bath

****We do our best to keep these floor plans updated, but the number and type of beds in each room may change. Please contact us to confirm, if needed.****

Sunflower Room Layout*



The Sunflower building is centrally heated and cooled. There are a total of 34 beds. Women's and men's bathroom facilities are shared with all who stay in this building.

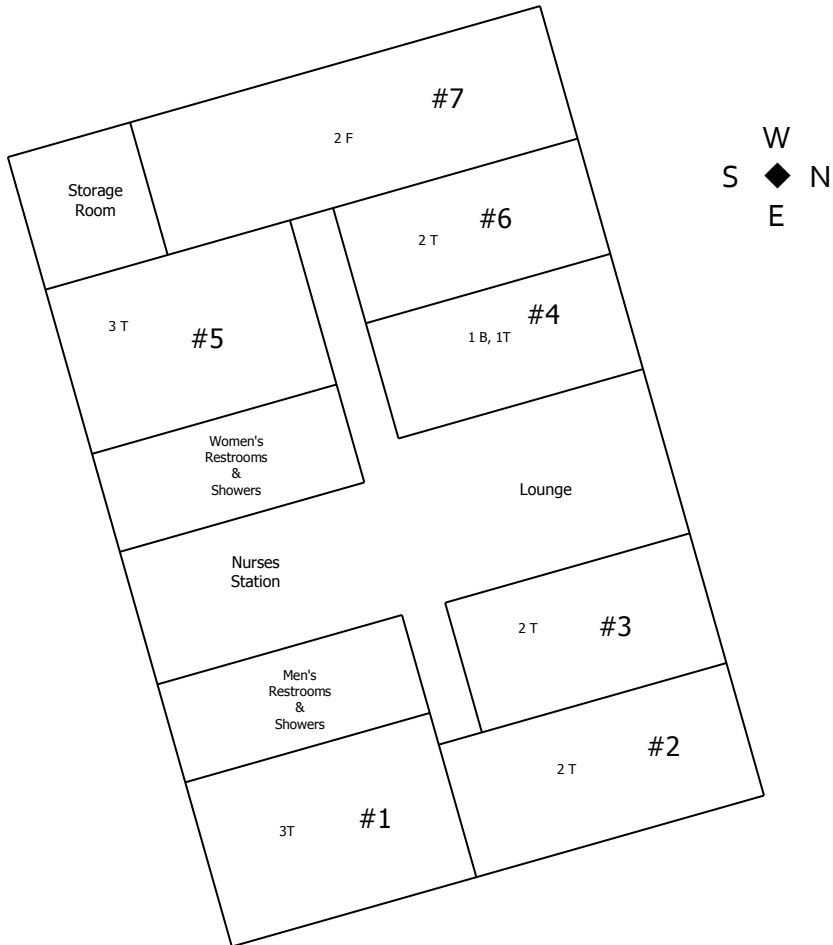
*T = twin beds B = bunk beds F = full bed

****We do our best to keep these floor plans updated, but the number and type of beds in each room may change. Please contact us to confirm, if needed.****

Cottonwood Room Layout*



The Cottonwood building has 17 beds and is centrally heated and cooled. Women's and men's bathroom facilities are shared with all who stay in this building.



*T = twin beds B = bunk beds F = full bed

****We do our best to keep these floor plans updated, but the number and type of beds in each room may change. Please contact us to confirm, if needed.****

Bluestem



The Bluestem house is located on the township road before you reach the main camp driveway. The house is centrally heated and cooled. Both levels of Bluestem require guests to climb at least a few stairs.

There are three bedrooms on the main floor. Each room has a double bed; one room has two double beds. There are two full baths on the main floor. Also on the main floor are a living room and a large kitchen area that is fully equipped with refrigerator, stove, pots & pans, and table settings for 20. Please confirm any specific needs with camp staff.

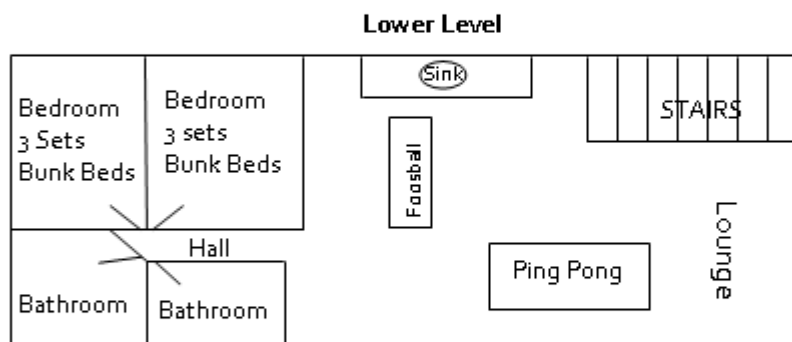
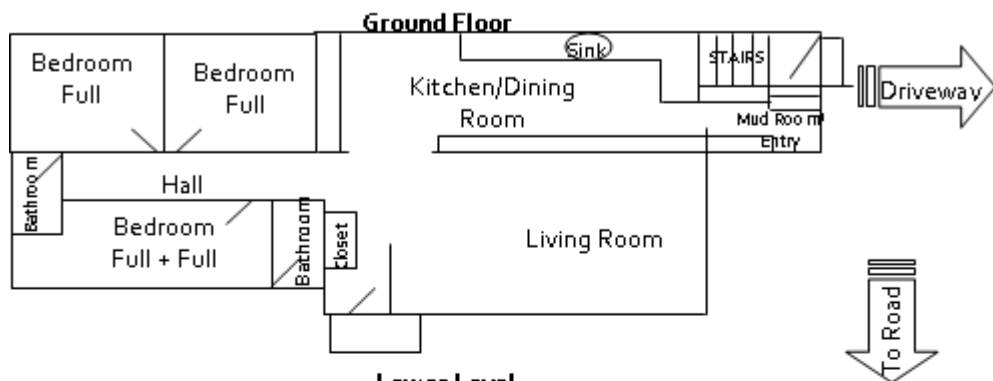
The basement has two rooms with three bunk beds each and two full bathrooms. The basement is a gathering area with foosball & ping pong tables. All activity areas at Main Camp are shared with all other groups (playground, the river, sports fields, canoes, etc.). Groups are asked to be aware of when their activities may disrupt worship services or activities of others using the camp grounds. Tenting is available to the east of the house. RV hookups are not available. Maintenance and farmland areas are off limits to guests.

Groups provide their own bedding and prepare their own meals. Beds have pillows and a comforter. Please bring your own towels and personal toiletries. Bed linens (pillowcase, flat/flitted sheets) are available for rental. Kitchen towels and dish cloths are provided.

As with all Camp MennoScah facilities, groups are expected to clean and leave Bluestem in a condition ready for the next group to use. Instructions for cleaning are posted.

**Please note that some retreat supplies are not available for the Bluestem house. Some supplies not available include use of a PA system, the electric keyboard, and TV/DVD.

Bluestem Room Layout*

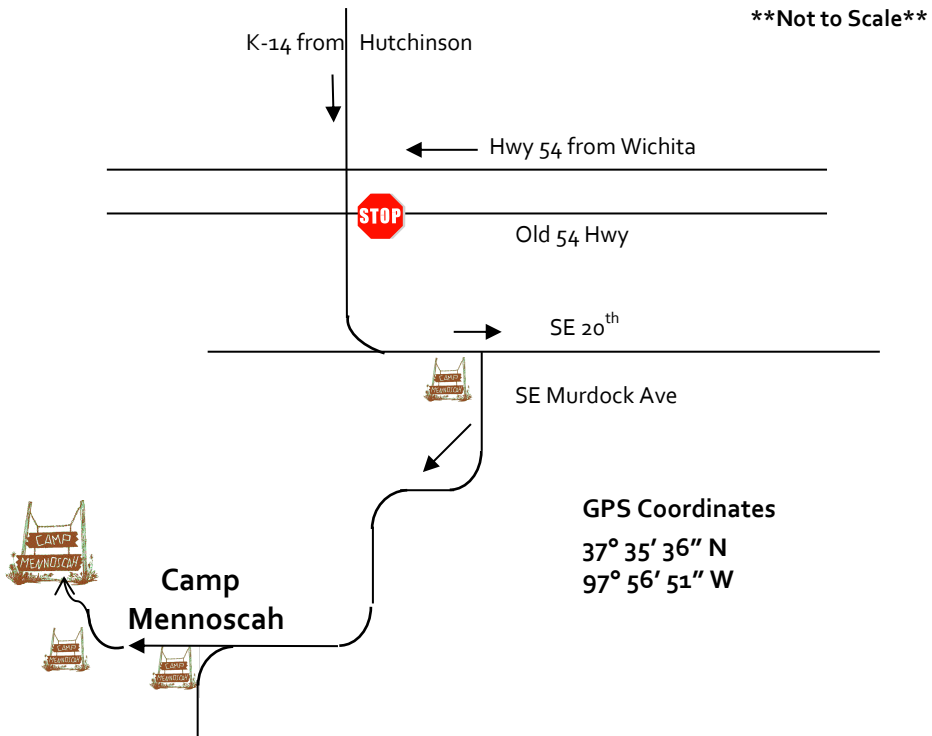


*Not to scale



**Please note that some retreat supplies are not available for the Bluestem house. Some supplies not available include use of a PA system and TV/DVD.

Directions to Camp Mennoscah



from Wichita: Take Hwy 54 West to K-14 (Hutchinson/Murdock exit). Turn left (south); go straight (past stop sign) across Old Hwy 54. Turn right (south) onto SE Murdock at the first Camp Mennoscah sign and continue through Murdock on blacktop road until you get to the 2nd Camp Mennoscah sign. Turn off onto the dirt road and follow to camp driveway.

from Hutchinson: Take K-14 South about 30 miles and turn right (south) onto SE Murdock at the first Camp Mennoscah sign and continue through Murdock on blacktop road until you get to the 2nd Camp Mennoscah sign. Turn off onto the dirt road and follow to camp driveway.

Go to www.campmennoscah.org for further directions or give us a call.



Camp Mennoscah

PO Box 65, 9458 SE 40th St
Murdock, KS 67111
620-297-3290
www.campmennoscah.org